

## 1122 Chobert

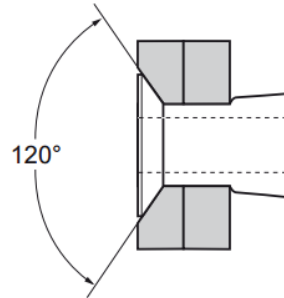
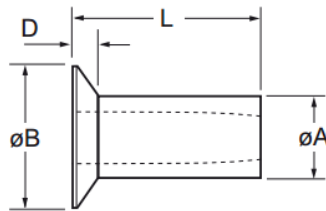
Steel - Countersunk head  
3.2 mm (1/8") - 6.4 mm (1/4")

### Features

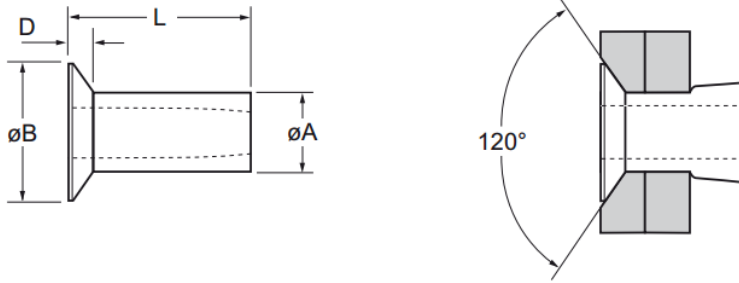
- Consistent controlled clamp, ideal for soft or brittle materials
- Internally tapered bore ensures consistent light clamp to reduce potential damage to materials
- Expands radially during installation to ensure maximum hole fill
- Lower in-place costs than welding or nail rivets
- Ideal pivot pin or hose tail
- Can be bowl fed for larger volume applications using automated equipment

### Material

- Low carbon steel, zinc plated, clear trivalent passivated



Part No.	Size ø	Grip Range		Hole Size		øB max.	D max.	L max.	øA max.	Fasteners per pod ± 1	Shear (typical) kN
		min.	max.	min.	max.						
01122-00404	3.2 (1/8")	0.91	1.57	3.26	3.34	5.20	0.92	3.25	3.25	90	1.40
01122-00405		0.91	2.36								
01122-00406		1.57	3.18								
01122-00408		3.18	4.75								
01122-00410		4.75	6.35								
01122-00412		6.35	7.92								
01122-00506	4.0 (5/32")	1.57	3.17	4.09	4.17	6.22	0.97	4.04	4.04	61	2.40
01122-00508		3.17	4.75								
01122-00510		4.75	6.35								
01122-00512		6.35	7.92								
01122-00514		7.92	9.52								
01122-00516		9.52	11.10								



Part No.	Size ø	Grip Range		Hole Size		øB max.	D max.	L max.	øA max.	Fasteners per pod ± 1	Shear (typical) kN
		min.	max.	min.	max.						
01122-00607	4.8 (3/16")	1.57	3.17	4.85	4.93	8.61	1.43	5.7	4.85	52	3.20
01122-00609		3.17	4.75					7.3		41	
01122-00611		4.75	6.35					8.9		33	
01122-00613		6.35	7.92					10.5		28	
01122-00615		7.92	9.52					12.1		25	
01122-00617		9.52	11.10					13.7		22	
01122-00619		11.10	12.70					15.3		19	
01122-00813	6.4 (1/4")	6.35	7.92	6.35	6.43	10.19	1.45	10.5	6.35	28	4.40
01122-00815		7.92	9.52					12.1		25	
01122-00817		9.52	11.10					13.7		22	
01122-00819		11.10	12.70					15.3		19	
01122-00821		12.70	14.27					16.8		18	
01122-00823		14.27	15.87					18.4		16	
01122-00825		15.87	17.45					20.0		15	

### Assembly Applications

- Automotive
- Electronic components
- Sheet metal
- Electrical engineering
- Domestic appliances
- General light fabrication
- Injection moulded components

